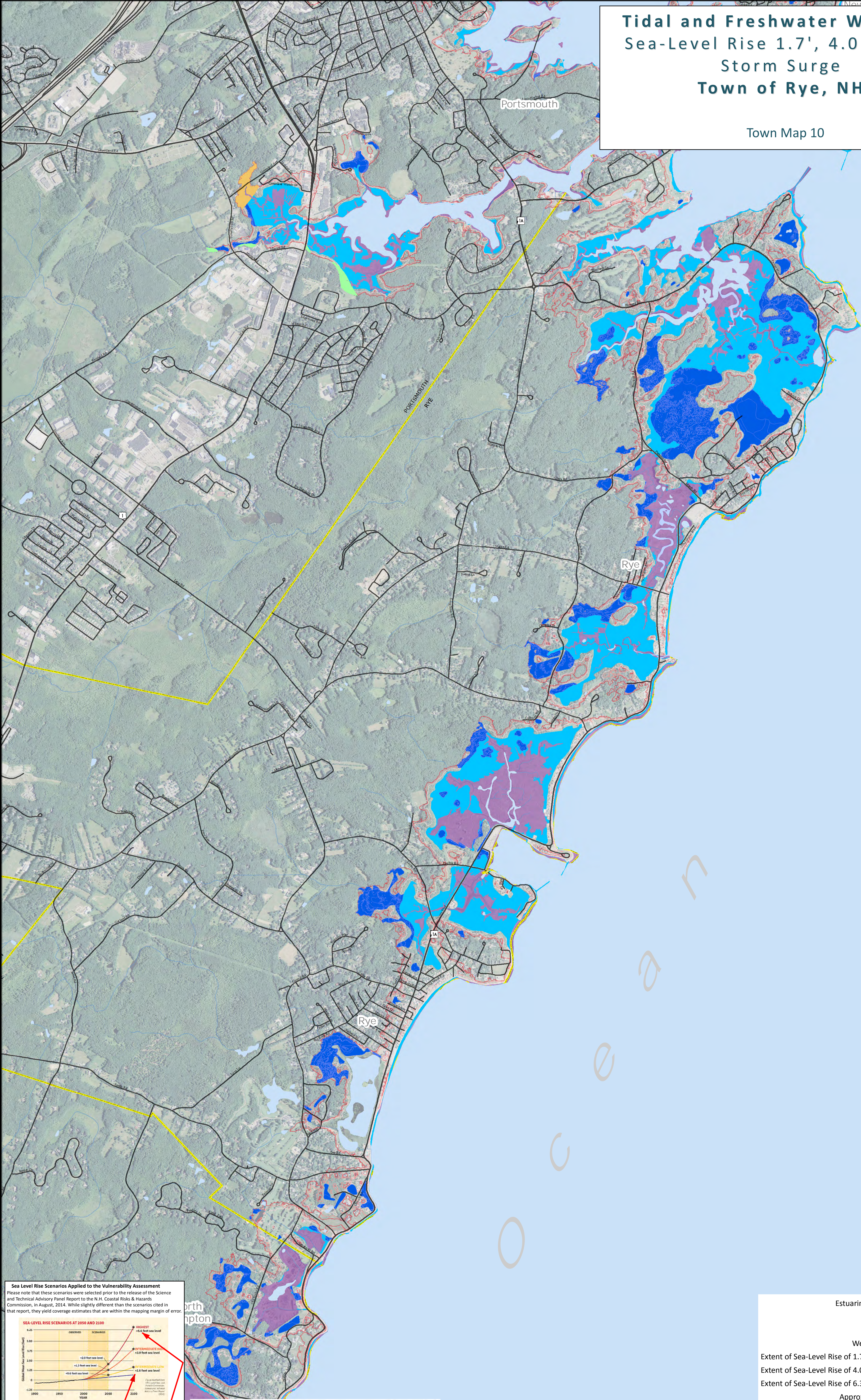
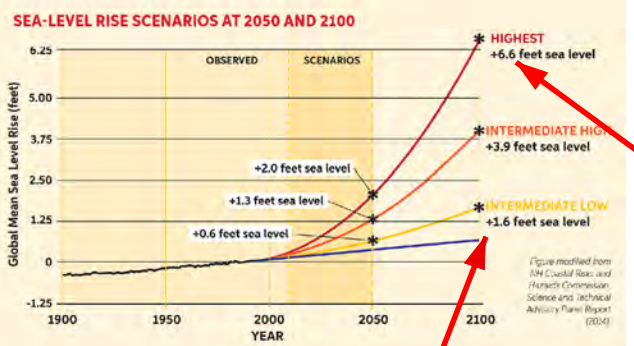


Tidal and Freshwater Wetlands  
Sea-Level Rise 1.7', 4.0', 6.3' +  
Storm Surge  
Town of Rye, NH

Town Map 10



**Sea Level Rise Scenarios Applied to the Vulnerability Assessment**  
Please note that these scenarios were selected prior to the release of the Science and Technical Advisory Panel Report to the N.H. Coastal Risks & Hazards Commission, in August, 2014. While slightly different than the scenarios cited in that report, they yield coverage estimates that are within the mapping margin of error.



Wake CP, Kirshen P, Huber M, Knuuti K, and Stampone M (2011) Sea-level Rise, Storm Surges, and Extreme Precipitation in Coastal New Hampshire: Analysis of Past and Projected Future Trends, prepared by the Science and Technical Advisory Panel for the New Hampshire Coastal Risks and Hazards Commission.

	1986		2050	
	Low	High	Low	High
Current Elevation of MHHW <sup>1</sup>	4.4	4.4	4.4	4.4
1993 Sea Flood Height	4.4	4.4	4.4	4.4
Scenario	4.4	4.4	4.4	4.4
Static SLR	1.0	1.0	2.5	2.5
Tidal Surge Elevation <sup>2</sup>	12.2	12.9	13.7	17.5

Wake CP, E Burakowski, E Kelsey, K Hayhoe, A Stoner, C Watson, E Douglas (2011) Climate Change in the Piscataqua/Great Bay Region: Past, Present, and Future. Carbon Solutions New England Report for the Great Bay (New Hampshire) Stewards.

### TIDES TO STORMS

Preparing For New Hampshire's Future Coast

ROCKINGHAM PLANNING COMMISSION

FEDERAL EMERGENCY MANAGEMENT AGENCY (FEMA)

NH GRANIT

DOT

The Tides to Storms project is funded by New Hampshire Homeland Security and Emergency Management (HSEM) through a Pre-Disaster Mitigation Grant from the Federal Emergency Management Agency (FEMA).

Additional funding, support and data provided by the U.S. Department of Transportation, Federal Highways Administration, New Hampshire Department of Transportation and New Hampshire GRANIT-Earth Systems Research Center, University of New Hampshire.

- Estuarine and Marine Wetland
- Freshwater Wetland
- Stratified Drift Aquifer
- Wellhead Protection Area
- Extent of Sea-Level Rise of 1.7 feet with Storm Surge
- Extent of Sea-Level Rise of 4.0 feet with Storm Surge
- Extent of Sea-Level Rise of 6.3 feet with Storm Surge
- Approx. MHHW - Tidal Extent

### Map Key

- Major Roads
- Local Roads
- Town Boundaries
- Waterbodies
- Approx. MHHW - Tidal Extent
- 2014 NAIP 1 Meter Aerial Photo

0 0.175 0.35 0.7 1.05 1.4 Miles