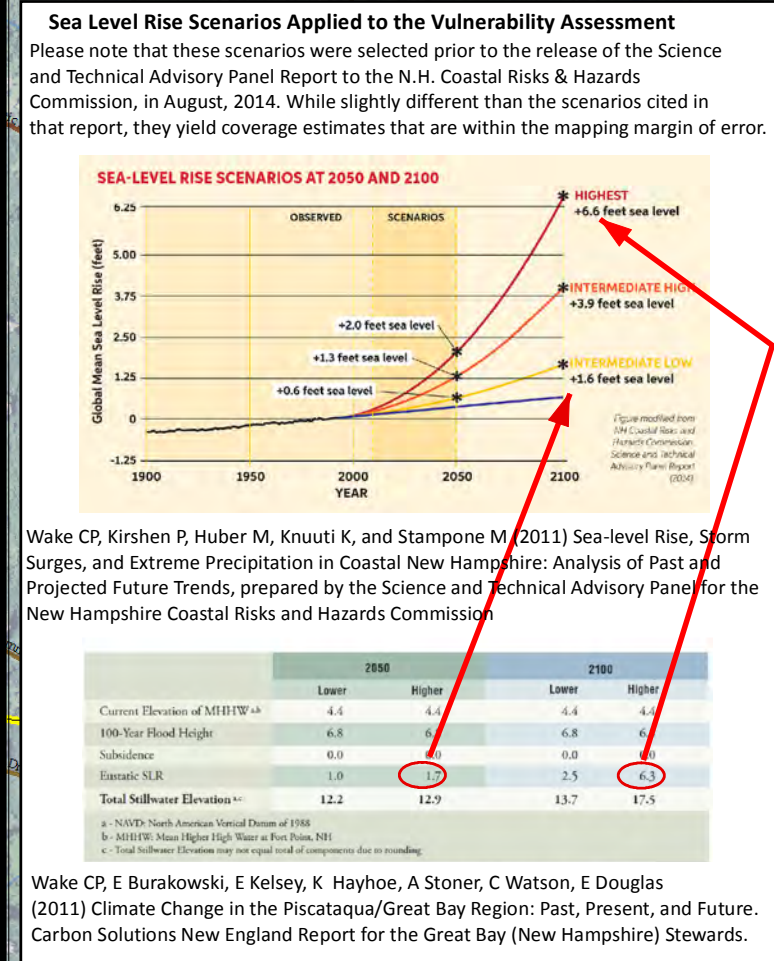
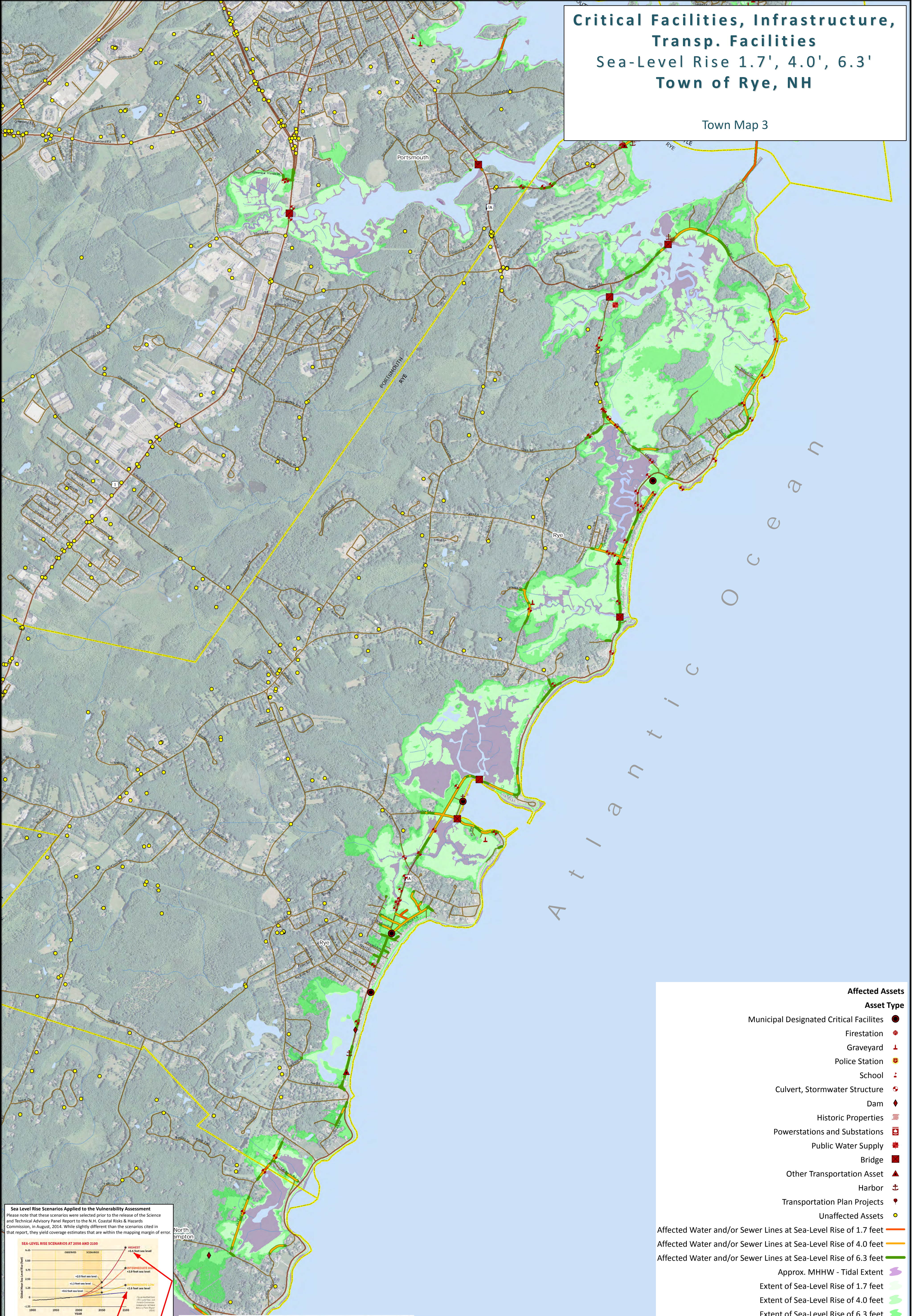


Critical Facilities, Infrastructure,  
Transp. Facilities  
Sea-Level Rise 1.7', 4.0', 6.3'  
Town of Rye, NH

Town Map 3



**TIDES TO STORMS**  
Preparing For New Hampshire's Future Coast

ROCKINGHAM  
PLANNING  
COMMISSION

FEDERAL  
EMERGENCY  
MANAGEMENT  
AGENCY

NH  
GRANIT

DOT  
Department of Transportation

The Tides to Storms project is funded by New Hampshire Homeland Security and Emergency Management (HSEM) through a Pre-Disaster Mitigation Grant from the Federal Emergency Management Agency (FEMA).

Additional funding, support and data provided by the U.S. Department of Transportation, Federal Highways Administration, New Hampshire Department of Transportation and New Hampshire GRANIT-Earth Systems Research Center, University of New Hampshire.

**Affected Assets**

**Asset Type**

- Municipal Designated Critical Facilities
- Firestation
- Graveyard
- Police Station
- School
- Culvert, Stormwater Structure
- Dam
- Historic Properties
- Powerstations and Substations
- Public Water Supply
- Bridge
- Other Transportation Asset
- Harbor
- Transportation Plan Projects
- Unaffected Assets

Affected Water and/or Sewer Lines at Sea-Level Rise of 1.7 feet

Affected Water and/or Sewer Lines at Sea-Level Rise of 4.0 feet

Affected Water and/or Sewer Lines at Sea-Level Rise of 6.3 feet

Approx. MHHW - Tidal Extent

Extent of Sea-Level Rise of 1.7 feet

Extent of Sea-Level Rise of 4.0 feet

Extent of Sea-Level Rise of 6.3 feet

**Map Key**

- Major Roads
- Local Roads
- Town Boundaries
- Waterbodies
- Approx. MHHW - Tidal Extent
- 2014 NAIP 1 Meter Aerial Photo

0 0.15 0.3 0.6 0.9 1.2 Miles