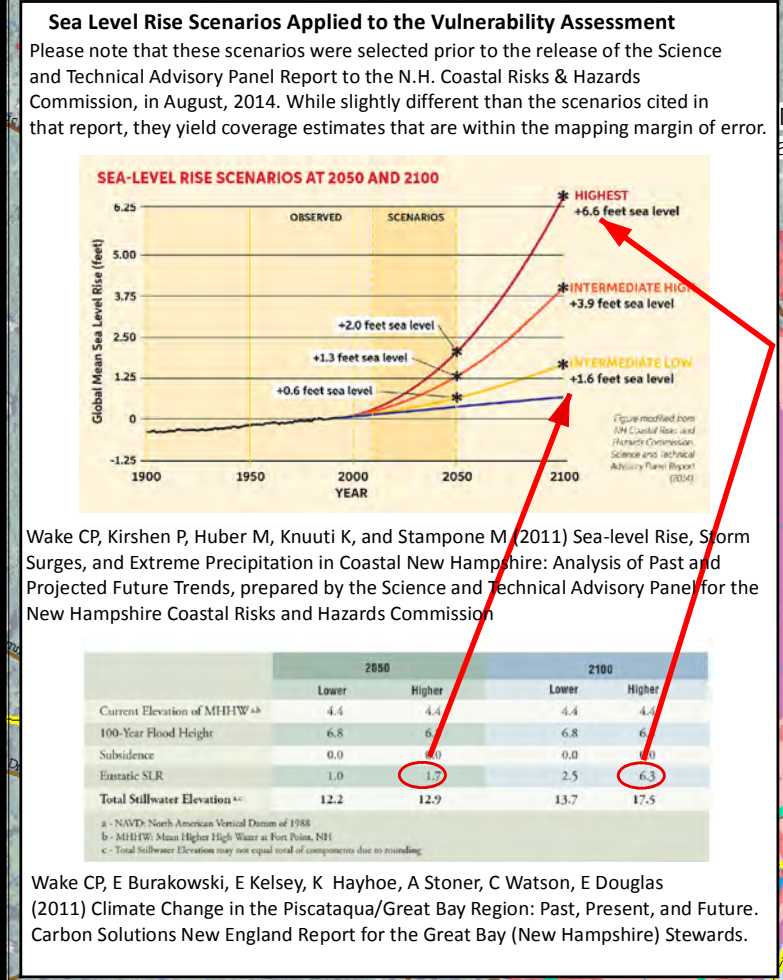
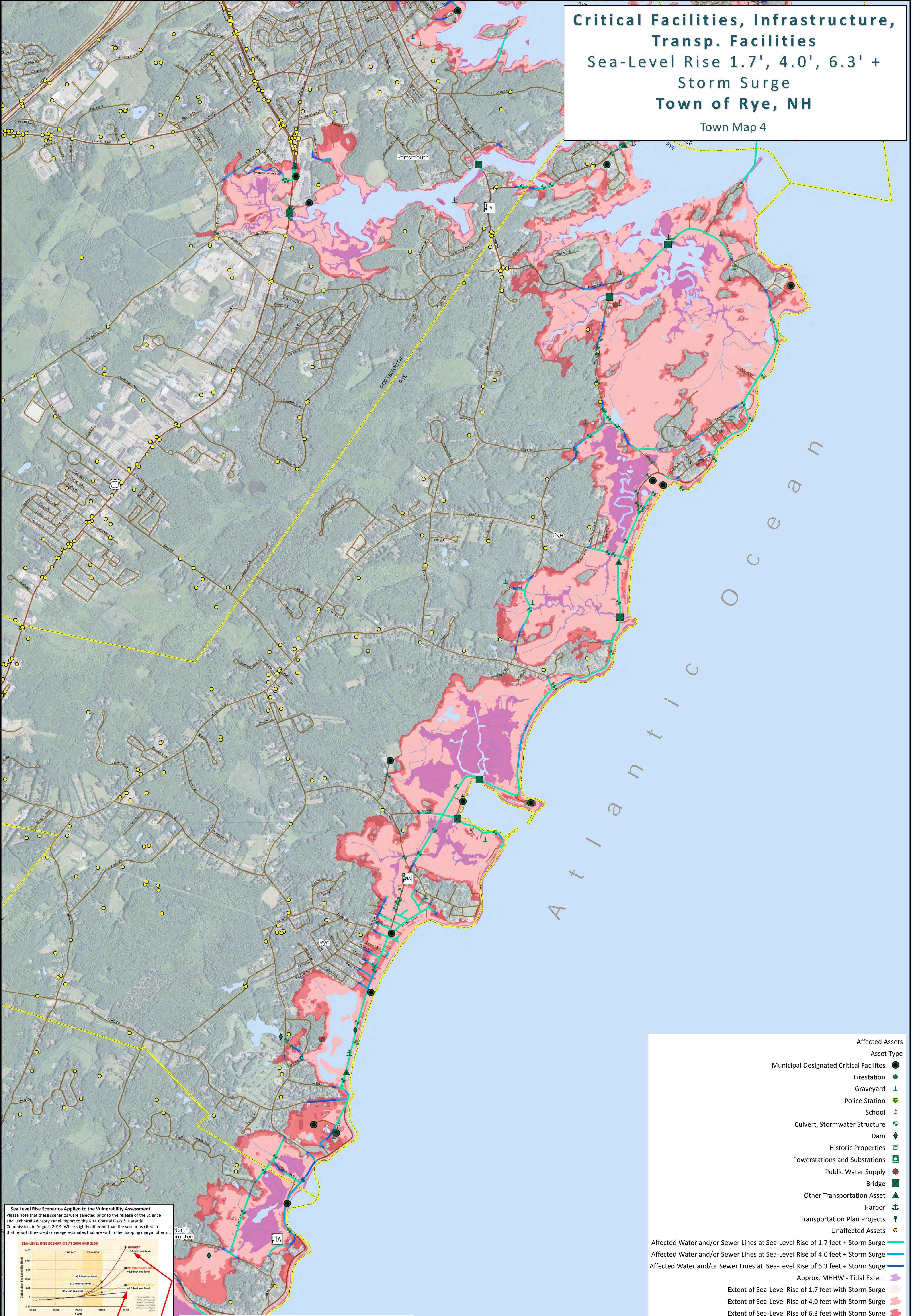


Critical Facilities, Infrastructure, Transp. Facilities  
Sea-Level Rise 1.7', 4.0', 6.3' + Storm Surge  
Town of Rye, NH

Town Map 4



**TIDES TO STORMS**  
Preparing For New Hampshire's Future Coast

ROCKINGHAM PLANNING COMMISSION

The Tides to Storms project is funded by New Hampshire Homeland Security and Emergency Management (HSEM) through a Pre-Disaster Mitigation Grant from the Federal Emergency Management Agency (FEMA).

Additional funding, support and data provided by the U.S. Department of Transportation, Federal Highways Administration, New Hampshire Department of Transportation and New Hampshire GRANIT-Earth Systems Research Center, University of New Hampshire.

NH GRANIT  
UNIVERSITY OF NEW HAMPSHIRE

Affected Assets  
Asset Type

- Municipal Designated Critical Facilities
- Firestation
- Graveyard
- Police Station
- School
- Culvert, Stormwater Structure
- Dam
- Historic Properties
- Powerstations and Substations
- Public Water Supply
- Bridge
- Other Transportation Asset
- Harbor
- Transportation Plan Projects
- Unaffected Assets

Affected Water and/or Sewer Lines at Sea-Level Rise of 1.7 feet + Storm Surge

Affected Water and/or Sewer Lines at Sea-Level Rise of 4.0 feet + Storm Surge

Affected Water and/or Sewer Lines at Sea-Level Rise of 6.3 feet + Storm Surge

Approx. MHHW - Tidal Extent

Extent of Sea-Level Rise of 1.7 feet with Storm Surge

Extent of Sea-Level Rise of 4.0 feet with Storm Surge

Extent of Sea-Level Rise of 6.3 feet with Storm Surge

**Map Key**

- Major Roads
- Local Roads
- Town Boundaries
- Waterbodies
- Approx. MHHW - Tidal Extent
- 2014 NAIP 1 Meter Aerial Photo

0 0.15 0.3 0.6 0.9 1.2 Miles