

Source:
Aerial imagery obtained from ESRI online services.
All remaining base mapping data obtained from Rye, NH.
Figure developed by Wright-Pierce GIS Dept

Rye, New Hampshire

Stormwater Collection System

2012

- Stormwater Pipe > 15"

Stormwater Pipe ≤ 15"

Pipe (unknown diam.)

Watershed Boundary

Sub-Watershed Boundary

Contour (2ft)
- Drainage Crossing

Catch Basin

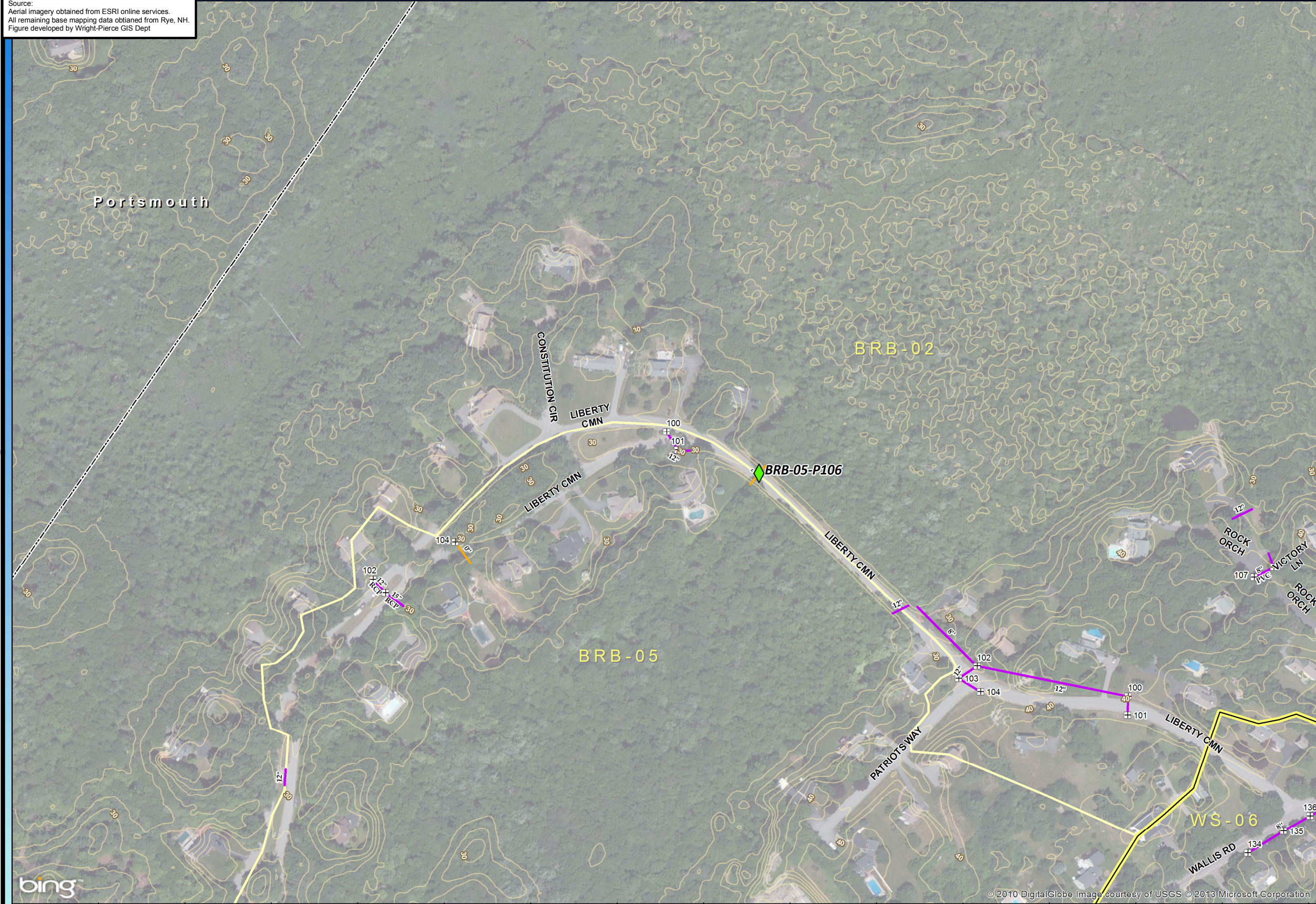
Drain Manhole

Dry Well

Town Boundary

Detention Pond

		19
	23	24
28	29	30
1" = 200'		
23		



W:\GIS_Development\Projects\NH\Rye\12617A-RyeNH-Stormwater-GIS\Figures\StormwaterMapbook_May2013_10.mxd