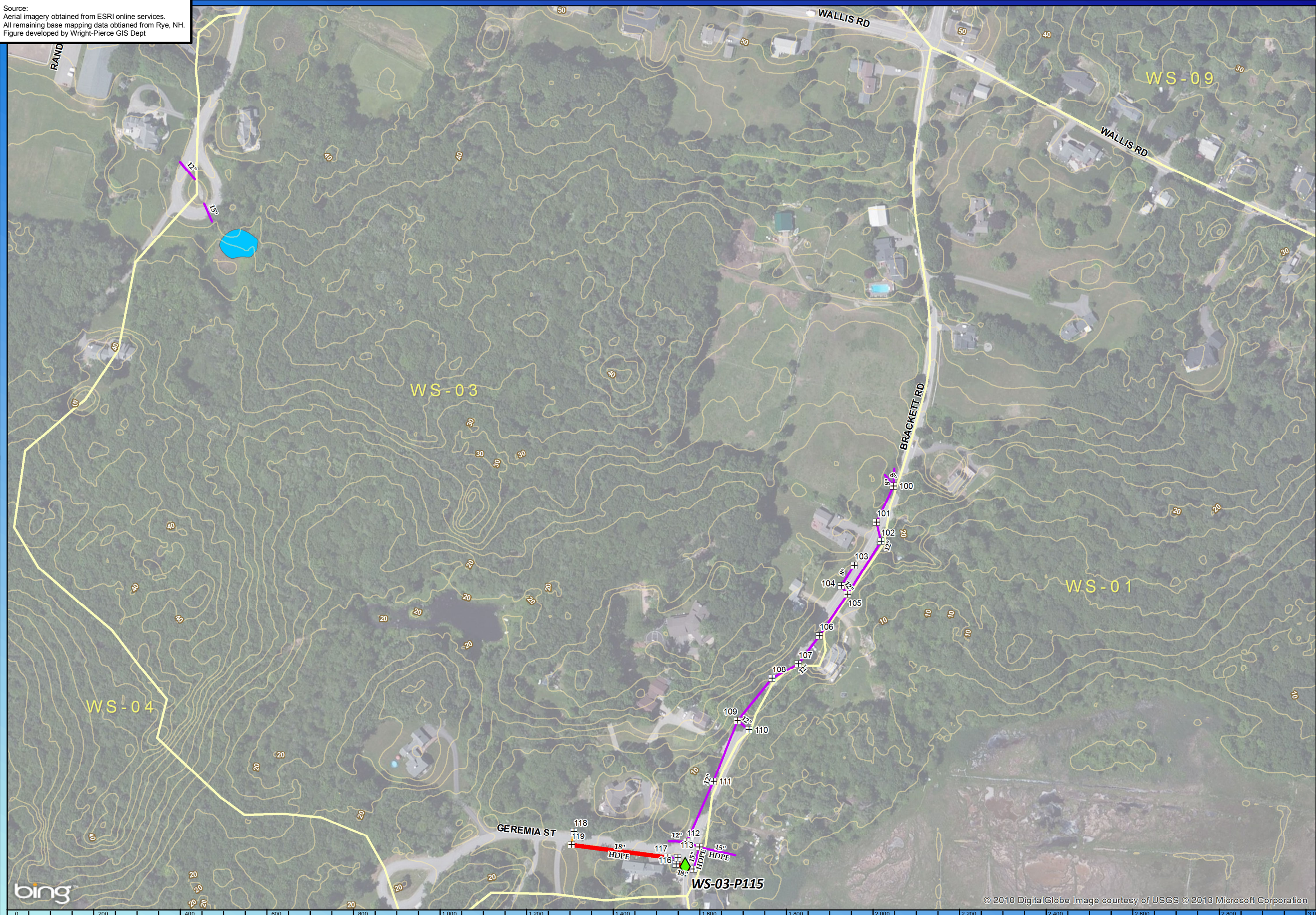


Source:
Aerial imagery obtained from ESRI online services.
All remaining base mapping data obtained from Rye, NH.
Figure developed by Wright-Pierce GIS Dept



WRIGHT-PIERCE
Engineering a Better Environment

Rye, New Hampshire
Stormwater Collection System
2012

Stormwater Pipe > 15"

Stormwater Pipe ≤ 15"

Pipe (unknown diam.)

Watershed Boundary

Sub-Watershed Boundary

Contour (2ft)

Drainage Crossing

Catch Basin

Drain Manhole

Dry Well

Town Boundary

Detention Pond

24	25	26
30	31	32
36	37	38

1" = 200'

31

© 2010 DigitalGlobe Image courtesy of USGS © 2013 Microsoft Corporation