

Source:
Aerial imagery obtained from ESRI online services.
All remaining base mapping data obtained from Rye, NH.
Figure developed by Wright-Pierce GIS Dept

Rye, New Hampshire
Stormwater Collection System
2012

- Stormwater Pipe > 15"

Stormwater Pipe ≤ 15"

Pipe (unknown diam.)

Watershed Boundary

Sub-Watershed Boundary

Contour (2ft)
- Drainage Crossing

Catch Basin

Drain Manhole

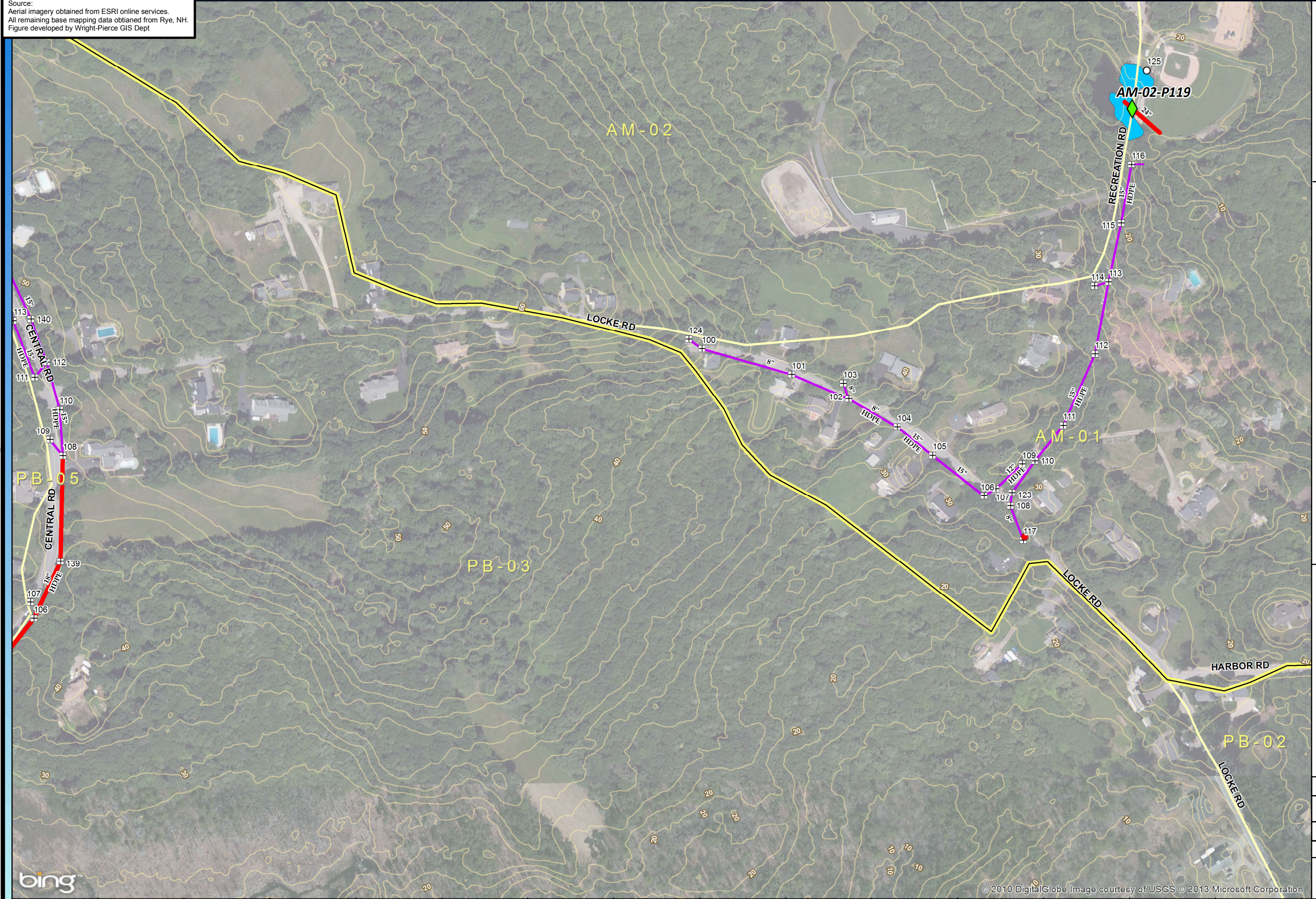
Dry Well

Town Boundary

Detention Pond

48	49	50
55	56	57
62	63	64

1" = 200'



W:\GIS_Development\Projects\NH\Rye\12617A-RyeNH-Stormwater-GIS\Figures\StormwaterMapbook_May2013_10.mxd