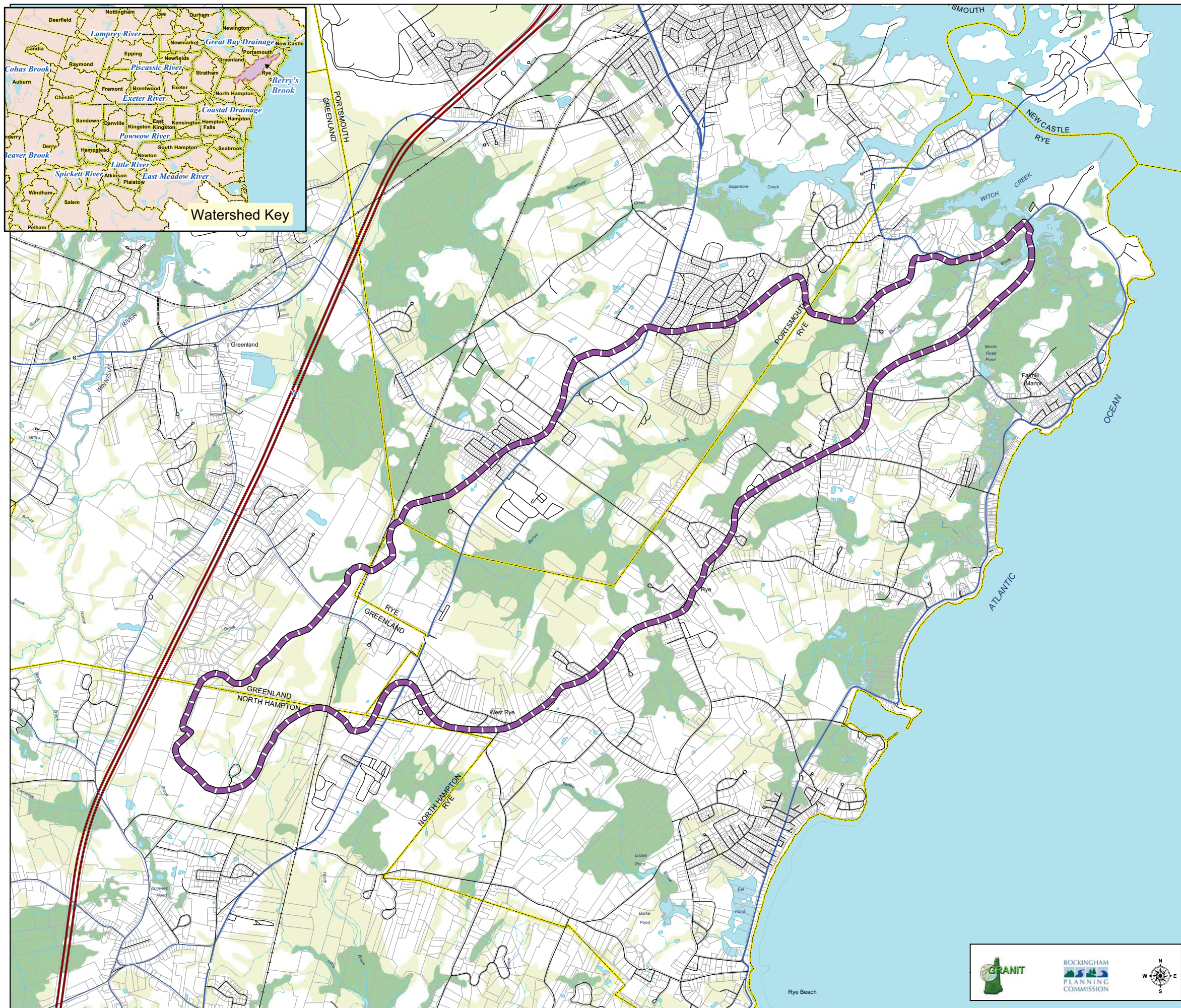
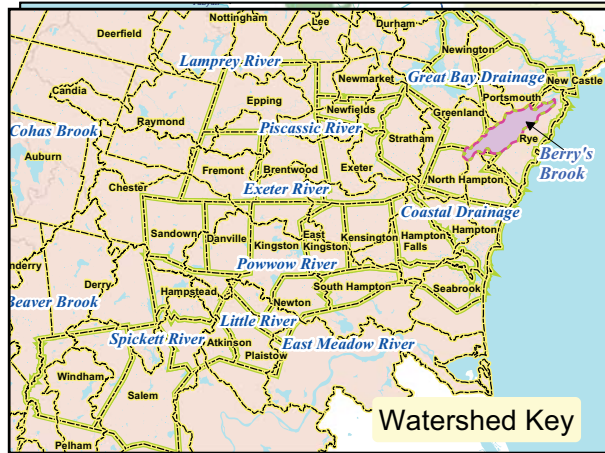


Berry's Brook Watershed Rye, New Hampshire Wetland Soils and Tax Parcels

March 2003



LEGEND

- Berry's Brook Watershed
- Watershed Divides
- Tax Parcels
- Wetland Soils**
- Very Poorly Drained Soils
- Poorly Drained Soils

BASE FEATURES

- | | | |
|------------------------------------|----------------------|-----------------------------|
| Interstate Highways | Railroads | Shoreline; Stream |
| State Primary System | Political Boundaries | Apparent Wetland Limit |
| State Secondary System | State Boundary | Intermittent Stream |
| Local Roads (Municipal or Private) | Town Boundary | Other Surface Water Feature |
| Ramp / Other | County Boundary | Bodies of Water |
| Unmaintained Roads (Class VI) | | |
| Trail | | |

This is a standard legend, some feature types shown may not be present on this map's extent.

MAP DATA SOURCES

Berry's Brook Watershed
Delineated by Rockingham Planning Commission in 1993 using USGS 7.5 minute 1:24,000 scale topographic maps (20 ft contour interval).

Tax Parcels
Tax parcel coverage of the Town of Rye was produced from line & annotation coverages produced by James Sewall Co. provided August 2002.
Tax parcels for the City of Portsmouth were provided by the Portsmouth Public Works Department, October 2002.
Tax parcels for the Town of North Hampton were produced by James Verra and Associates and was provided by The Town of North Hampton, September 2002.
Tax parcels for the Town of Greenland were provided by John E. O'Donnell & Associates, 1999.

Wetlands
Wetlands shown on this map are derived from soils classified as "very poorly drained" and "poorly drained" by the USDA Natural Resources Conservation Service. Soil boundaries are from NRCS Rockingham County Soil Survey, published at 1:20,000 scale. Soil unit boundaries that coincide with water body boundaries in the field will not always coincide on this map, due to their differing data sources and scales. Information shown on this map is for planning purposes only. Data automation completed by Complex Systems Research Center, UNH, October 1999. Soils delineation based on field work, conducted by the USDA Natural Resource Conservation Service, completed in 1985.

Watersheds
Watersheds were delineated and automated by the New Hampshire Department of Environmental Services, Water Resources Division. Source maps for this data layer are USGS 1:24,000 Topographic Quadrangle maps and USDA Natural Resources Conservation Service 1:250,000 watershed maps.

Base Features
Base features (transportation, political and hydrographic) were automated from the USGS Digital Line Graph data, 1:24,000, as archived in the GRANIT database at Complex Systems Research Center, Institute for the study of Earth, Oceans and Space, University of New Hampshire, Durham, NH; 1992-1999. The roads within the Rockingham Planning Region have been updated by Rockingham Planning Commission and by NH Department of Transportation through ongoing efforts.

The differing source scales of the data layers on this map results in varying locational accuracy of the features on this map. Use with caution. This Map is for Planning Purposes Only.

