

Rye Public Library Board of Trustees
March Newsletter Submission

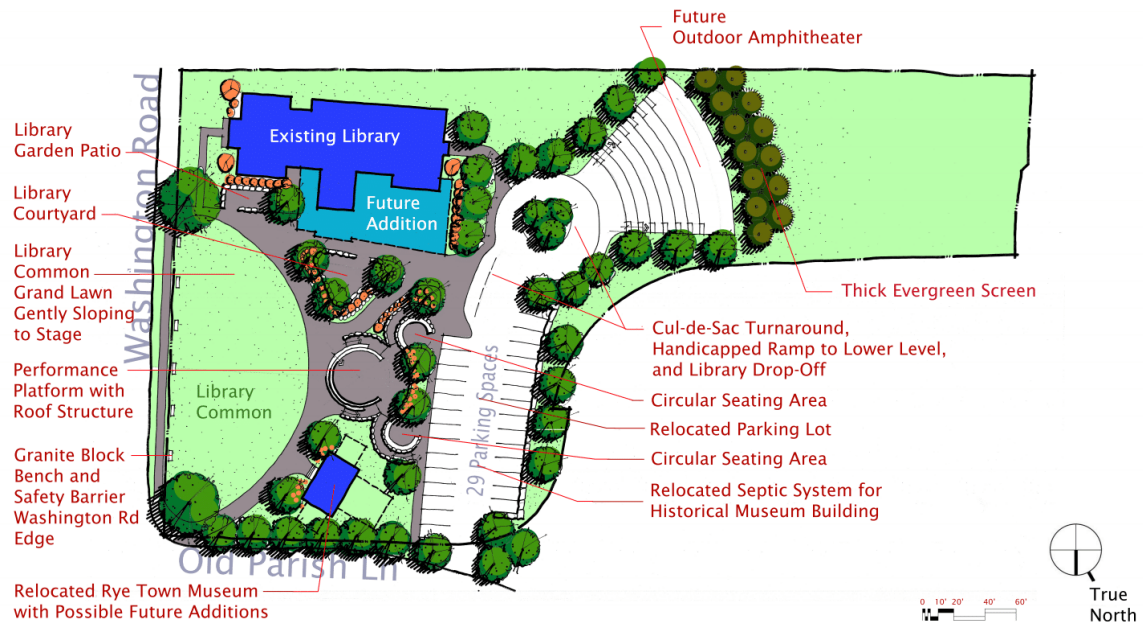
Over the course of the last several months, the Trustees continued to work on the creation of a conceptual Master Plan (shown in the rendering above) to optimize the development of the two-acre parcel of land that presently includes the existing Rye Public Library building, the Rye Town Museum, and the Library Common.

Beginning in the summer of 2021, the Trustees engaged other Boards, Commissions, Committees, Groups, and interested persons to inform them and to seek their participation and input; this included the creation of an Advisory Committee to meet regularly with the Trustees as the vision and the conceptual plans evolved.

The Trustees engaged Jonathan Halle of Warrenstreet Architects to create several concept designs that would better integrate into the needs of the Rye Town Center, the current and future programming needs and opportunities both within the library building, as well as the green space of the Library Common. Along with addressing the needs of the Rye Town Museum, the goal was to provide an adequate area for that space while also providing flexibility that would allow sufficient room for a possible future expansion of the library building. This resulted in concept plan to move the Rye Town Museum building onto the Library Common in a campus-like setting, and a relocation of the parking lot to the rear of the Common.

This Fall, the Trustees obtained an “opinion of likely construction cost” to execute the concept with an eye toward putting a Warrant Article forward to cover some of the cost. The Trustees would look to fundraise for the completion of the project (landscaping, fixtures, and possibly a performance platform). However, the opinion of likely construction cost revealed complexities associated with moving the Town Museum building. Those complexities, coupled with the current economic conditions, the highly inflated and unpredictable costs of construction, have precluded the Board from pursuing a Warrant Article at this time.

At its January meeting, the Board decided to scale back on the implementation of the concept seen in the rendering and focus on a plan for the green space of common that would utilize only the 0.4-acre parcel along Washington Road. The Trustees will continue to work to develop this vital space in the heart of our community. Despite the challenges of planning a project of this kind, the Board is committed to the process and will continue to engage and inform the community about its ongoing efforts to create a vibrant, welcoming, programmable, useful, public space, called the Library Common, in the Rye Town Center.



Rye Public Library Proposed Master Plan
June 2022