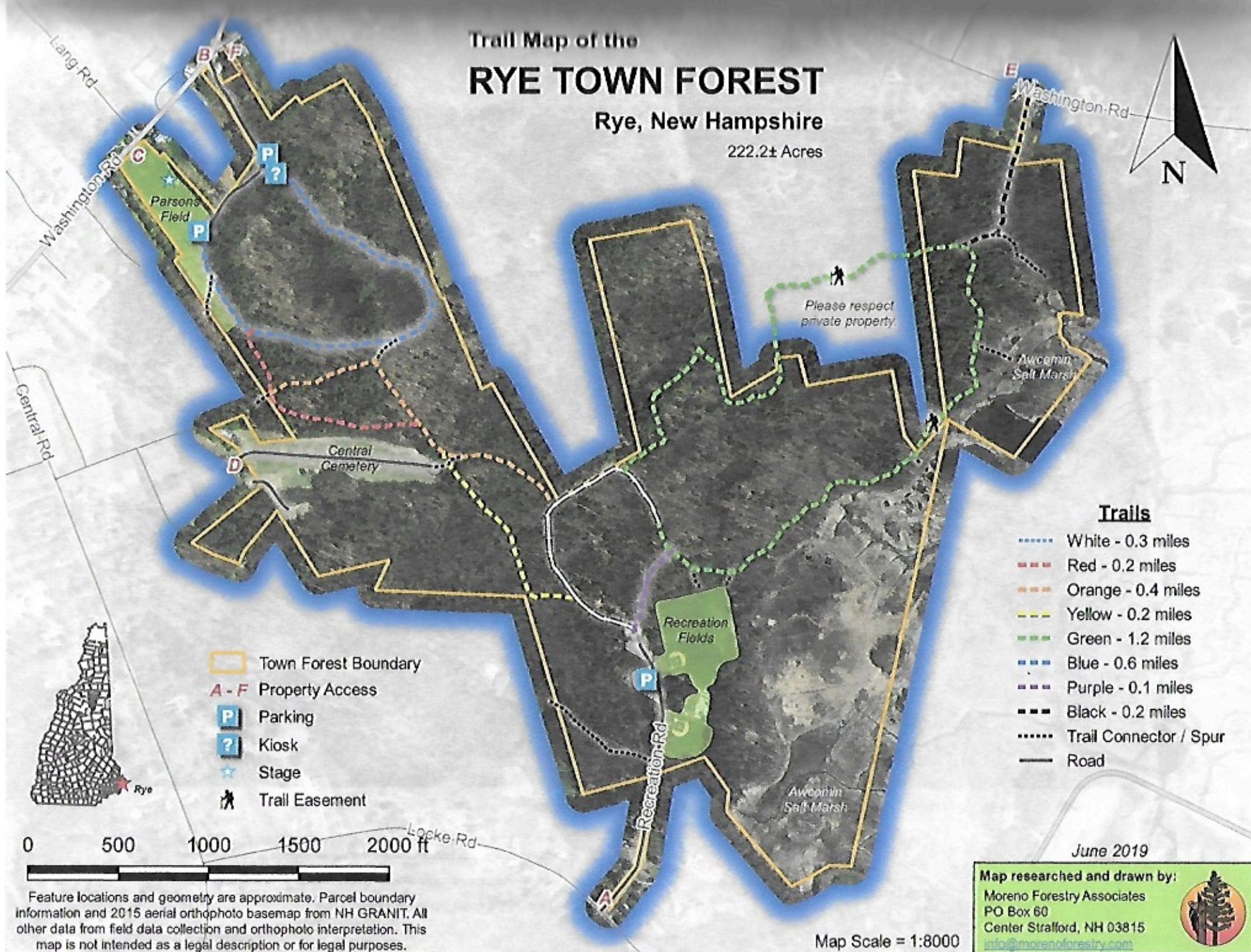


Trail Map of the RYE TOWN FOREST

Rye, New Hampshire

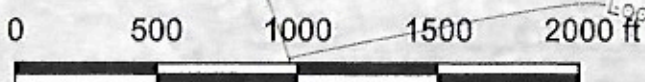
222.2± Acres



Trails

- White - 0.3 miles
- Red - 0.2 miles
- Orange - 0.4 miles
- Yellow - 0.2 miles
- Green - 1.2 miles
- Blue - 0.6 miles
- Purple - 0.1 miles
- Black - 0.2 miles
- Trail Connector / Spur
- Road

- Town Forest Boundary
- A - F** Property Access
- P** Parking
- ?** Kiosk
- Stage
- Trail Easement



Feature locations and geometry are approximate. Parcel boundary information and 2015 aerial orthophoto basemap from NH GRANIT. All other data from field data collection and orthophoto interpretation. This map is not intended as a legal description or for legal purposes.

Map Scale = 1:8000

June 2019

Map researched and drawn by:
 Moreno Forestry Associates
 PO Box 60
 Center Strafford, NH 03815
info@morenoforestry.com